

The I.B. Programme at Clearpoint Elementary



Primary Years
Programme

What is the International Baccalaureate (I.B.) Programme?



The I.B. Mission

“The International Baccalaureate aims to develop inquiring, knowledgeable and caring young people who help to create a better and more peaceful world through intercultural understanding and respect.”

-www.ibo.org

- Offered in over 5,000² schools around the world
- Non-profit organization that aims to better the world through education.
- Focus on independent learning skills (group work, projects, play time)
- Inquiry-based learning





The I.B. Approach

Focus on the I.B. Attributes



- Caring
- Inquirer
- Open-Minded
- Principled
- Knowledgeable
- Thinker
- Reflective
- Risk-Taker
- Communicator
- Balanced



The 5 Approaches to Learning

- Research (media literacy, information literacy...)
- Communication (exchanging information, literacy, technology...)
- Social (collaboration, social-emotional...)
- Self-Management (organization, mindfulness...)
- Thinking (critical, creative...)

The Action Cycle

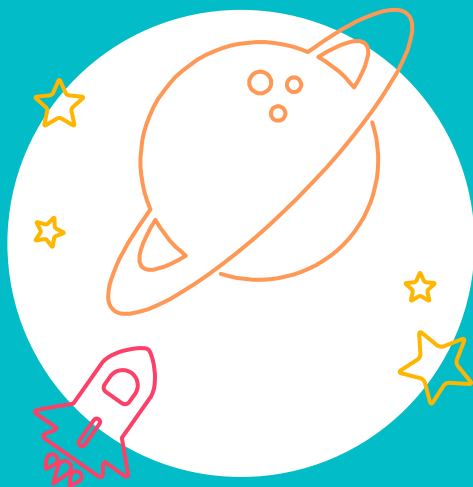


reflect
Think about the
consequences
of your actions.

choose
Make choices
based on your
reflections.

act
Carry through
with your choices.





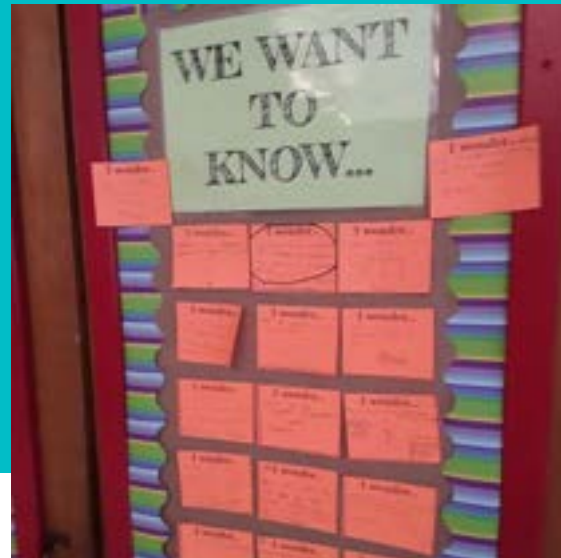
The Curriculum





- In line with the Quebec Education Program
- Teachers plan collaboratively, across all subjects
- Reflective of meaningful, global issues
- Allows opportunities for student-led action
- Guided by the interests of the students

8





Students explore different Units of Inquiry that focus on the following Transdisciplinary Themes;



WHO WE ARE



HOW THE WORLD WORKS



HOW WE EXPRESS OURSELVES



HOW WE ORGANISE OURSELVES



SHARING THE PLANET



WHERE WE ARE IN PLACE AND TIME

I.B. and the Kindergarten - K4 student



Early Learners

The I.B. Primary Years Programme has a special section for learners ages 3-6.

Units of Inquiry

Students will explore 4 Units of Inquiry throughout the year (instead of 6)

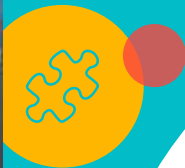
Play

Play is the primary vehicle of learning at these ages.

Community

Strong focus on building relationships with teachers, parents, and students.





Student Action

Student-initiated actions
from the Clearpoint
community



A white line-art icon of a lit lightbulb, positioned inside a red circle in the top-left corner of the slide.

Any questions?

You can find me at ibarroca@lbpearson.ca
(IB Coordinator - Clearpoint)

A white line-art icon of three interlocking puzzle pieces, positioned inside a pink circle in the bottom-right corner of the slide.A white line-art icon of a hand with the thumb pointing up, positioned inside a teal circle in the bottom-right corner of the slide.